

HOUSE & LAND PACKAGE

Lot 2219, Grieve Way, Wodonga

Vancouver 33



18m

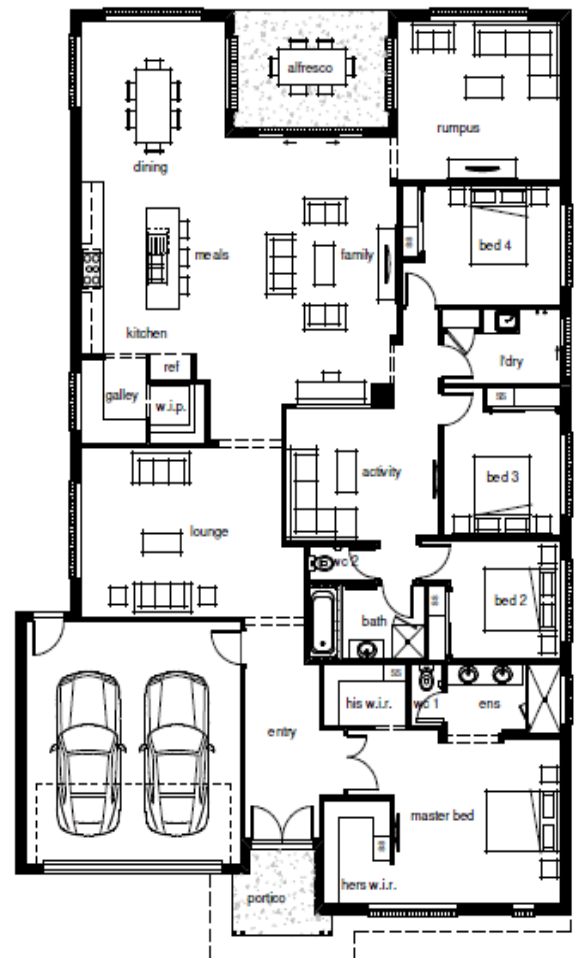
LOT WIDTH

35m

LOT DEPTH

Affordable Turnkey Home Package Inclusions:

- Site costs allowance
- Seaside facade
- Alfresco under roof
- Ducted evaporative cooling
- Ducted gas heating
- Floor coverings throughout
- 900mm cooking appliances, dishwasher
- Powdercoated windows, screens & locks
- Sliding doors to robes
- Soft close toilet suites
- Toilet roll holders, towel rails & soap dish
- Three coat Dulux paint system
- Television points & TV antenna
- Colorbond roof with sarking & downpipes
- Concrete driveway allowance 40m²
- Landscaping allowance
- Colorbond fencing (1/2 share)
- Letterbox & clothesline



Total House & Land:

\$455,126*

Total Home Area: **305m²**

Total Land Area: **600m²**

Contact Scott Burgess
scott.burgess@hadar.com.au

M 0484888828

58 Maygar Drive, Wodonga VIC 3690

Images shown may show optional features not included in the quoted price. Speak to our New Home Consultant for further information. This home is based on Hadar Homes Lifestyle inclusions and facade options.