



Lot 2230 (600m²)

Grieve Way, White Box Rise, WODONGA
PLAZA

Bacchus 2

21.31sq



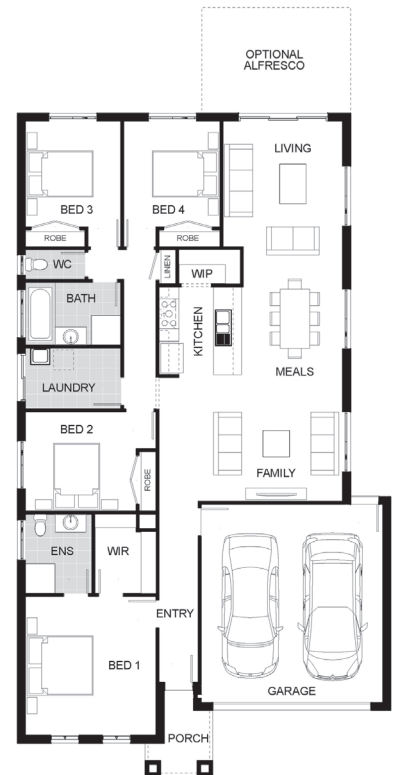
THE **ALPHA**
COLLECTION

WHITE
BOX
RISE
WODONGA

FROM
\$366,395*

Inclusions:

- ▶ Spacious Meals & Family Area
- ▶ Quality Stainless Steel Appliances Inc 900mm Freestanding Oven
- ▶ Gas Ducted Heating
- ▶ Solar Hot Water System
- ▶ Overhead Cupboard to Kitchen
- ▶ Lever Down Handles
- ▶ Professional Colour Consultation
- ▶ Sectional Garage Door
- ▶ Colorbond Roof
- ▶ 6 Star Energy Rating
- ▶ Bushfire Attack Level 12.5 Included
- ▶ Bluescope Steel House Frame
- ▶ 50 Year Structural Guarantee
- ▶ Please contact us for our current Promotion.



FOR ENQUIRIES CONTACT:

DYLAN BEAVER M: 0459 159 488 | E: DYLANB@JGKINGHOMES.COM.AU

WWW.JGKINGHOMES.COM.AU

Package price is based on standard plan and builders preferred siting. All packages are subject to developer approval and availability. Images are for illustration purposes only and may depict fixtures, finishes and features either not supplied or that are upgrade options. JG King reserves the right to withdraw or alter the prices at any time without notice. Rock excavation and removal is not included in the price and site costs are subject to site conditions. BAL 12.5 included based on the following items: Metal roof only, Evaporative cooling unit must be Brivis AD56 or AD66 models, No combustible materials are to be within 900mm of the dwelling such as - Timber decks, Timber pergolas, Timber fencing, Timber screening or cladding. Speak to JG King Representative for full house and land specifications and Inclusions. Copyright © 2015 Reproduction in any form either in whole or part is forbidden. JG King Pty Ltd (T/A J G King Homes) ABN 21 006 627 210 Registered Building Practitioner Licence DBU-2579.

Based on land price of: \$136,000