

House & Land Package



📍 Wodonga



Pavilion facade

Acacia From \$569,000*

The Acacia is loaded full of features offering a fun feel to a functional two storey home.

All Essentials Inclusions PLUS

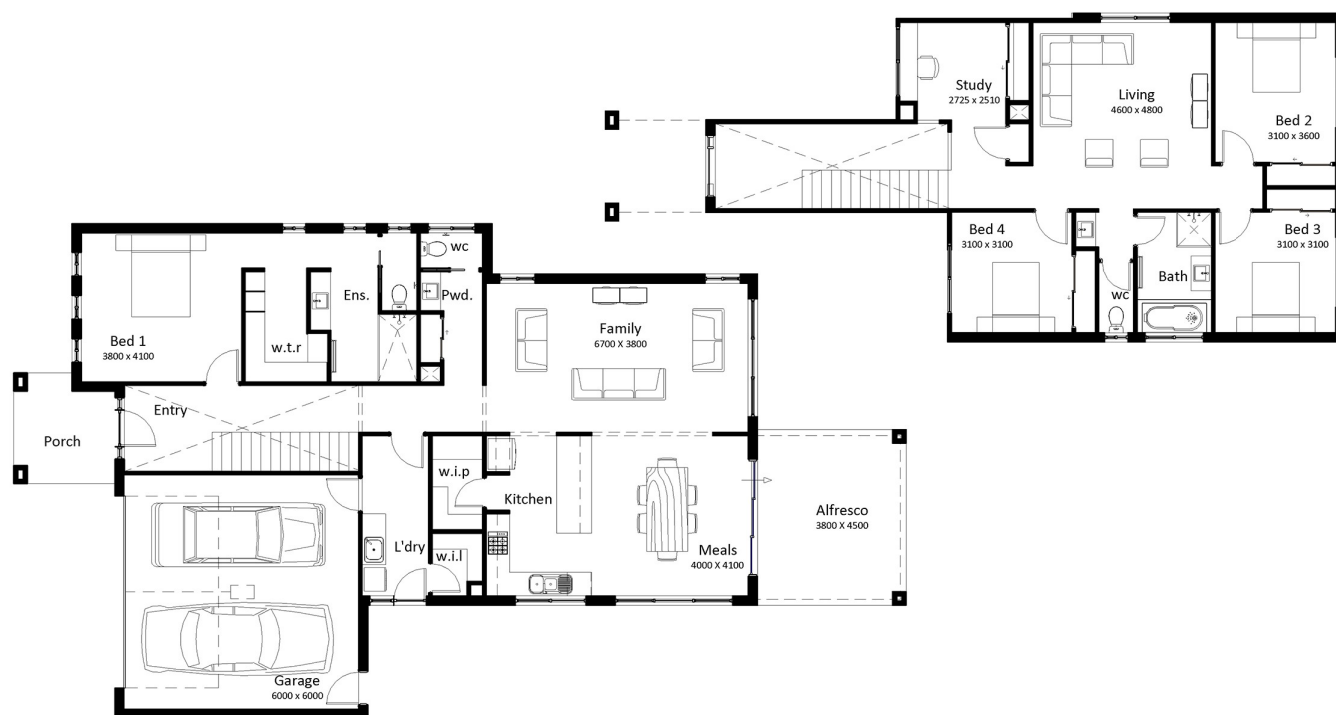
- ✓ Heating & Cooling
- ✓ Carpet and Tiling throughout
- ✓ Colorbond roofing
- ✓ Concrete driveway and crossover
- ✓ Stone benchtops
- ✓ NBN
- ✓ Siteworks & connections
- ✓ TV aerial, brick letterbox, clothesline

Living	225.28m ²	24.25sq
Alfresco	17.10m ²	1.84sq
Porch	6.84m ²	0.74sq
Garage	39.57m ²	4.26sq
Total	288.79m²	31.09sq

House width 12.66m

House length 22.83m

White Box Rise: Lot 2412 Lowerson Way (696m²)
Wodonga, VIC 3690



- 4
- 2
- 2
- 2

Find out more

Dylan Beaver
dbeaver@southernvale.com.au
0418 597 329
southernvale.com.au

*All drawings, images, photography are for illustrative purposes and should be used as a guide only. Floor plan may vary depending on the facade chosen. Southern Vale Homes reserves the right to revise plans, specifications and prices without notice or obligation. Foundation engineering to be confirmed upon soil test. Price excludes stamp duty on land and pre-title discount. ABN: 89 150 500 57 Licence No. VIC: DBU 6240 NSW: 259700C