

# House & Land Package



📍 Wodonga



Allure facade

## Vantage 26 From \$442,286\*

The Vantage is designed with modern families at heart, with centralised study nook, spacious laundry and clever storage at every turn.

All Essentials Inclusions PLUS

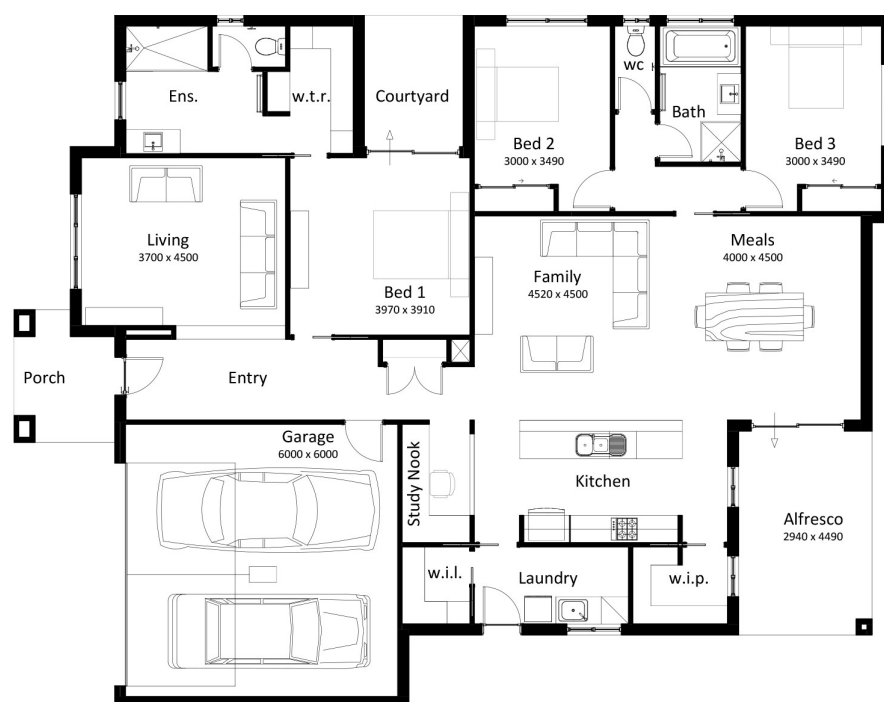
- ✓ Heating & Cooling
- ✓ Carpet and Tiling throughout
- ✓ Colorbond roofing
- ✓ Concrete driveway and crossover
- ✓ Siteworks & connections
- ✓ Stone benchtops
- ✓ Dishwasher
- ✓ NBN

Living	185.27m <sup>2</sup>	19.94sq
Alfresco	13.20m <sup>2</sup>	1.42sq
Porch	5.93m <sup>2</sup>	0.64sq
Garage	39.26m <sup>2</sup>	4.23sq
<b>Total</b>	<b>249.98m<sup>2</sup></b>	<b>26.91sq</b>

**House width 15.25m**

**House length 18.10m**

White Box Rise: Lot 2316 Gratwick View (622m<sup>2</sup>)  
Wodonga, VIC 3690



- 3
- 2
- 2
- 2

Find out more

Dylan Beaver  
dbeaver@southernvale.com.au  
0418 597 329  
[southernvale.com.au](http://southernvale.com.au)

\*All drawings, images, photography are for illustrative purposes and should be used as a guide only. Floor plan may vary depending on the facade chosen. Southern Vale Homes reserves the right to revise plans, specifications and prices without notice or obligation. Foundation engineering to be confirmed upon soil test. Price excludes stamp duty on land and pre-title discount. ABN: 89 150 500 57 Licence No. VIC: DBU 6240 NSW: 259700C